

# Making Research Count



## MRC Newsletter Spring 2015

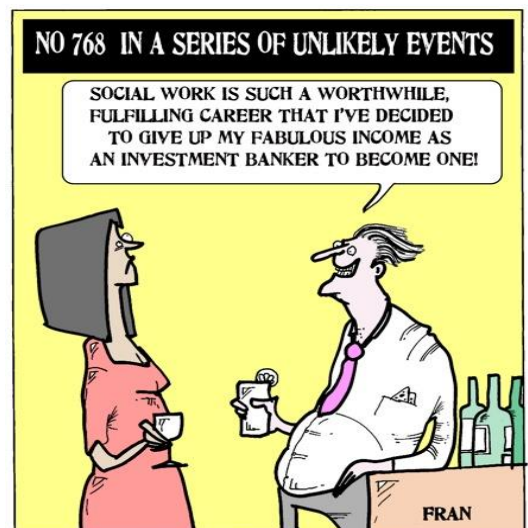
### Social work in the media

There continues to be lots of debate about the portrayal of social workers in television programmes and soap operas. Did you know that Chief Social Worker for Adults, Lyn Romeo, is working with the Northern Writers Centre and University of Newcastle to publish an anthology of fictional short stories to be written by well-known UK authors? The writers will be given an insight into the complexities of social work rather than relying on often used stereotypes.

### Meeting your priorities

Our events programme is designed to meet your current priorities; check out our remaining events for 2015 and a taster of our new programme for 2015-16. This will feature events in response to your requests for seminars on serious case reviews (adults and children), the Care Act, and advocacy.

Do get in touch if you have any topics you would like to see featured.



UNIVERSITY of York

Department of Social Policy and Social Work



## Upcoming events

<p><b>Visual Impairment and deafblindness; a research and practice day</b> Thursday 23<sup>rd</sup> April, 10.00am-4.30pm</p>	<p>Presented by Dr. Parvaneh Rabiee of the University of York and Peter Simcock of Staffordshire University.</p> <p>This event brings together the findings of a recent study on vision rehabilitation services with research in the area of social work and deafblindness.</p>
<p><b>Working with domestic abuse; a research and practice day</b> Wednesday 13<sup>th</sup> May, 10.00am-4.00pm</p>	<p>Presented by Professor Brid Featherstone of the Open University and Carlene Firmin, MBE, of the University of Bedfordshire.</p> <p>This event will consider working in partnership with families where there is domestic abuse and working with abuse in young people's relationships.</p>
<p><b>Child sexual exploitation; a research and practice day</b> Monday 18<sup>th</sup> May, 10.00am-3.00pm</p>	<p>Presented by Dr. Lucie Shuker and Dr. Camille Warrington of the International Centre for Sexually Exploited and Trafficked Young People at the University of Bedfordshire.</p> <p>This seminar will cover the challenges and complexities of working with child sexual abuse, with messages from research on effective practice.</p>
<p><b>Life story work in dementia</b> Thursday 11<sup>th</sup> June, 9.30am-12.45pm</p>	<p>Presented by Researchers from the Social Policy Research Unit (University of York) and partners.</p> <p>This event will present findings of a three year study, funded by the National Institute for Health Research, which looked at life story work in dementia care.</p>
<p><b>Ten years of the Mental Capacity Act; capturing experience</b> Monday 22<sup>nd</sup> June, 1.15pm to 4.30pm</p>	<p>Presented by Jill Manthorpe Professor of Social Work and Director of the Social Care Workforce Research Unit at Kings College London.</p> <p>This interactive workshop will take a close look at mental health social work in the context of the legislation.</p>



## Events programme 2015-16

Our launch event for the 2015/16 programme will be on 22<sup>nd</sup> September at the Priory Street Centre in York, with a full day event;

### Safeguarding Children and Young People; messages from research, implications for practice

22<sup>nd</sup> September 2015

Join us for a day of learning and discussion with a number of high profile speakers and presenters.

Professor Nick Frost, of Leeds Beckett University. Nick researches and writes widely in relation to childhood, multi-disciplinary work, children in care, family support and safeguarding. Since 2010 he has been Independent Chair of Bradford Safeguarding Children Board and will offer his views on the subject of serious case reviews and more



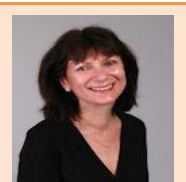
Professor Harry Ferguson, of the University of Nottingham. Harry's teaching and research interests include child protection, domestic violence, social work interventions into fatherhood and men's lives and the social science of social work. His most recent work looks at how to best protect and promote the well-being of children and help parents and other carers.



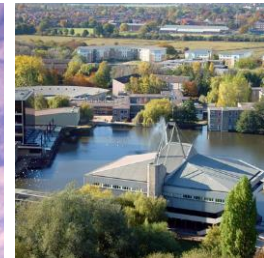
Juliet Kowprowska, Senior Lecturer in Social Work at the University of York. Juliet's primary interest is in communication in social work. She is co-editor of the Journal of Social Work Practice and will talk about her work on communicating with parents in the context of child protection.



Professor Nina Biehal of the University of York. Nina's research interests centre on vulnerable children and young people and their families. She has recently co-directed a study of abuse in care for the NSPCC and is currently directing the ESRC-funded study of pathways and outcomes for abused and neglected children. She also has a strong interest in cross-national research.







## Mental Health Social Work

In January we ran an event themed around the Crisis Care Concordat. Delegates greatly enjoyed our keynote speakers, including Inspector Michael Brown, of the College of Policing, otherwise known as the “mental health cop”. To read his blogs [click here](#)



We also heard from Andy McNichol, of Community Care, who is known as the journalist that social workers are happy to have in the room. Dr. Bryn Lloyd-Evans of University College London presented the latest findings from the CORE study at University College London, promoting quality improvement in Crisis Resolution Teams. Find out more at <http://www.ucl.ac.uk/core-study>

## Research and practice; can't have one without the other!

“Applying research evidence in social work practice” A new book by our academic lead **Dr. Martin Webber**, argues that it is vital that social workers are not only up to date with the latest research, but that they have the tools and understanding to successfully apply this to their practice.



Martin will be delivering a workshop for us in 2015-16 on this theme. To read more about the book [click here](#)

Details of Martin Webber's current research programmes can be found at [martinwebber.net/research](http://martinwebber.net/research). Here you will find details of 4 service evaluations including the 'Mindapples' training for people experiencing mental health issues, and street triage in North Yorkshire.

Contact us at [spsw-mrc@york.ac.uk](mailto:spsw-mrc@york.ac.uk) 01904 321237

## The Social Care Elf

The social care elf is a website and twitter account that aims to keep you up to date with reliable social care research, policy and guidance. Leading academics, researchers and practitioners post regular, and we think, thought-provoking blogs, with recent topics.



[www.thesocialcareelf.net](http://www.thesocialcareelf.net)  
@socialcareelf

For those of you working in mental health, the Social Care Elf has a relation; the Mental Elf. There is a website and twitter account, [www.thementalelf.net](http://www.thementalelf.net) and @mental\_elf, where recent blog topics have included dementia diagnosis, the cost of bipolar disorder, diagnosing schizophrenia and the links between suicide and unemployment.